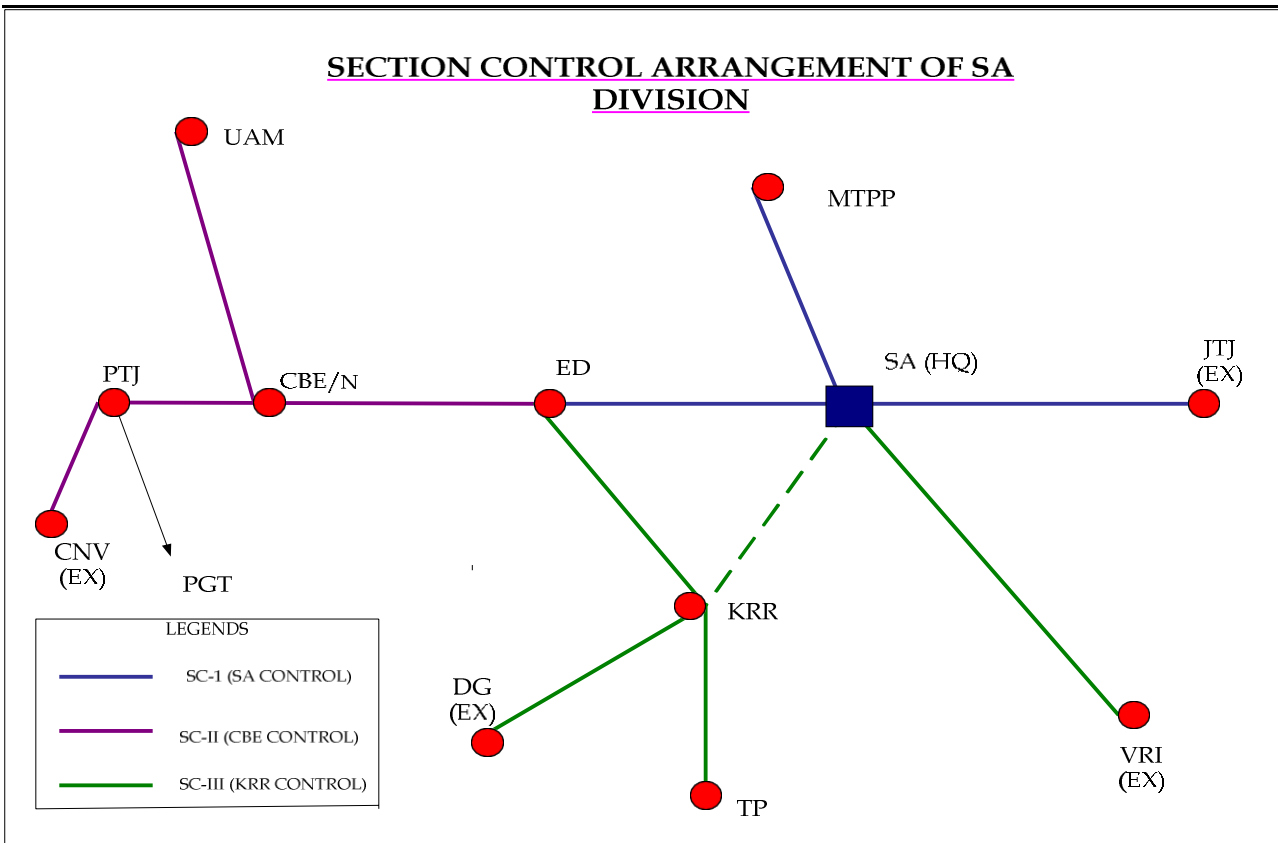


Section Control

Total Number of Station: 94

Total Number of Block Station:

Sl.No	Name of the Control	Section	Km	Total Km	Control Working media	Block working media
1	SA	ED-SA-JTJ	179.29	217	OFC	6-Quad
		SA-MTDM	37		OFC	6-Quad
2	CBE	ED-PTJ	106.5	204.5	OFC	6-Quad
		IGU-CBE-PTJ			OFC	6-Quad
		PTJ-CNV			OFC	6-Quad
		CBE-MTP	81		OFC	6-Quad
		MTP-QLR			Quad	6-Quad
		QLR-ONR			Quad	6-Quad
		ONR-UAM			Quad/OFC	6-Quad
3	KRR	ED-TPJ	141.12	353.97	OFC	6-Quad
		KRR-DG	73.97		OFC	6-Quad
		SA-VRI	138.88		OFC	6-Quad



Control Communication

<i>Section Control</i>			<i>Traction Power Control</i>		
Sl.No	Name of the Control	Section	Sl.No	Name of the Control	Section
1	SA	ED-SA-JTJ	1	SA	SA-JTJ, SA-ED, SA-MTDM
		SA-MTDM	2	ED	ED-PTJ
2	CBE	ED-PTJ	<i>Emergency Control</i>		
		IGU-CBE-PTJ	Sl.No	Name of the Control	Section
		PTJ-CNV			
		CBE-MTP-UAM	1	EMC-1	JTJ-ED,SA-MTDM
3	KRR	ED-TPJ	2	EMC-2	ED-CEB-PTJ-CNV
		KRR-DG	3	EMC-3	ED-TP,KRR-DG
		SA-VRI			SA-VRI,SA-NMKL-KRR

<i>MUX Details</i>			
Sl.No	Section	STM	PD Mux
1	SA-ED-CBE-PTJ	Tejas STM-16	PUNCOM
2	ED-KRR-TPJ	Tejas STM-1	PUNCOM
3	KRR-DG	Tejas STM-1	PUNCOM
4	JTJ-SA	Tejas STM-16	PUNCOM
5	CBE-MTP	Tejas STM-16	PUNCOM
6	SA-MTDM	Tejas STM-16	PUNCOM
7	MTP-ONR	Tejas STM-16	PUNCOM

<i>Protect path and BSNL Patch for control</i>					
Sl.No	Control	BSNL			OFC/2MB
		TC	TPC	RC/HL	
1	SA	MTDM,MTPP,ED, JTJ,TPT		ED,TPT, JTJ MTPP(HL)	Protection STM-16 (JTJ-SA- ED)
2	CBE	ED, PTJ,CBE,ONR (From SA) UAM, AVK, KAY (From CBE)			Protection STM-16 (ED-CBE)
3	KRR	ED,KRR,DG ,CHSM,,MTNL			Protection STM-16 (ED-TP)