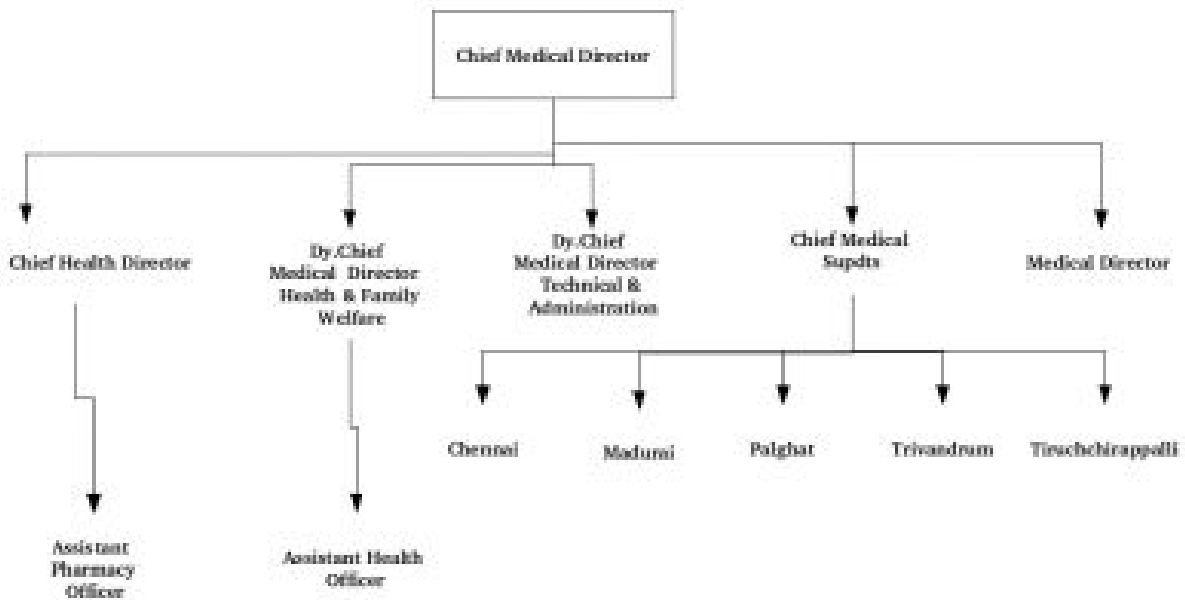


Organisation

Headquarters of the Medical branch guides, advises and supervises all divisions. It is headed by Chief Medical Director and assisted by one Chief Health Director, and two Deputy Chief Medical Directors . This office is situated in the fourth floor of Moor Market complex, in Chennai Central Railway Station.

Besides Railway Hospital/ Perambur which is Zonal headquarters hospital, five Divisional hospitals at Arakkonam, GoldenRoc, Madurai, Palghat, Trivandrum, four SubDivisional Hospital at Villupuram, Erode, Podhanur, Shoranur, one Production Unit hospital at Integral Coach Factory and 42 Healthunits are functioning. Total 216 Doctors and 1994 Paramedical staff are working in this Railway



The Chief Medical Director is the over all incharge of Medical Department of Southern Railway. He is assisted by Chief Health Director and two Dy.Chief Medical Directors in the Headquarters as well as Medical Director at Railway Hospital/Perambur and Chief Medical Superintendents of the divisions over the Zonal Railway

Chief Health Director

- Procurement of Drugs and Surgical Items for the year based on demand by consignee through Annual Indent and Supplementary Indent under the guidance of CMD.
- To Scrutinize and putup claims for Reimbursement to CMD
- To analyse and submit proposals for recognition of private hospital to CMD Machinery and Plants and Works programme
- Co-ordinating with CMD in Works Programme and Machinery and plants

Dy.Chief Medical Director/Health & Family Welfare.

Implementation of Community Health Activities at the Zonal Headquarters level under the guidance of CMD.

Dy.chief Medical Director/Technical & Administration

Incharge of Adminitrative and Day-to- Day functioning of headquarters under the guidance of CMD.

Assistant pharmacy officer

Preparation and timely submission of annual and supplementary drug indent.

Assisting CHD in submission of Proposals

Assistant Health Education Officer

Monitor & supervise Health Education and Family Welfare activities

at Zonal level .

Assisting Dy. C.M.D (H&FW) in all F.W. activities , policy matters,
and Programme planning.