

**Sr. DOM  
M.VASUDEVAN**

**DOM  
NITHIN NORBERT**

**AOM  
GOPU R UNNITHAN**

**AOM/GL.  
MURALEEDHARAN P**

**AO / MAQ  
ANOOP S**

**CHCs**

**TIs**

**SMRs  
SMs**

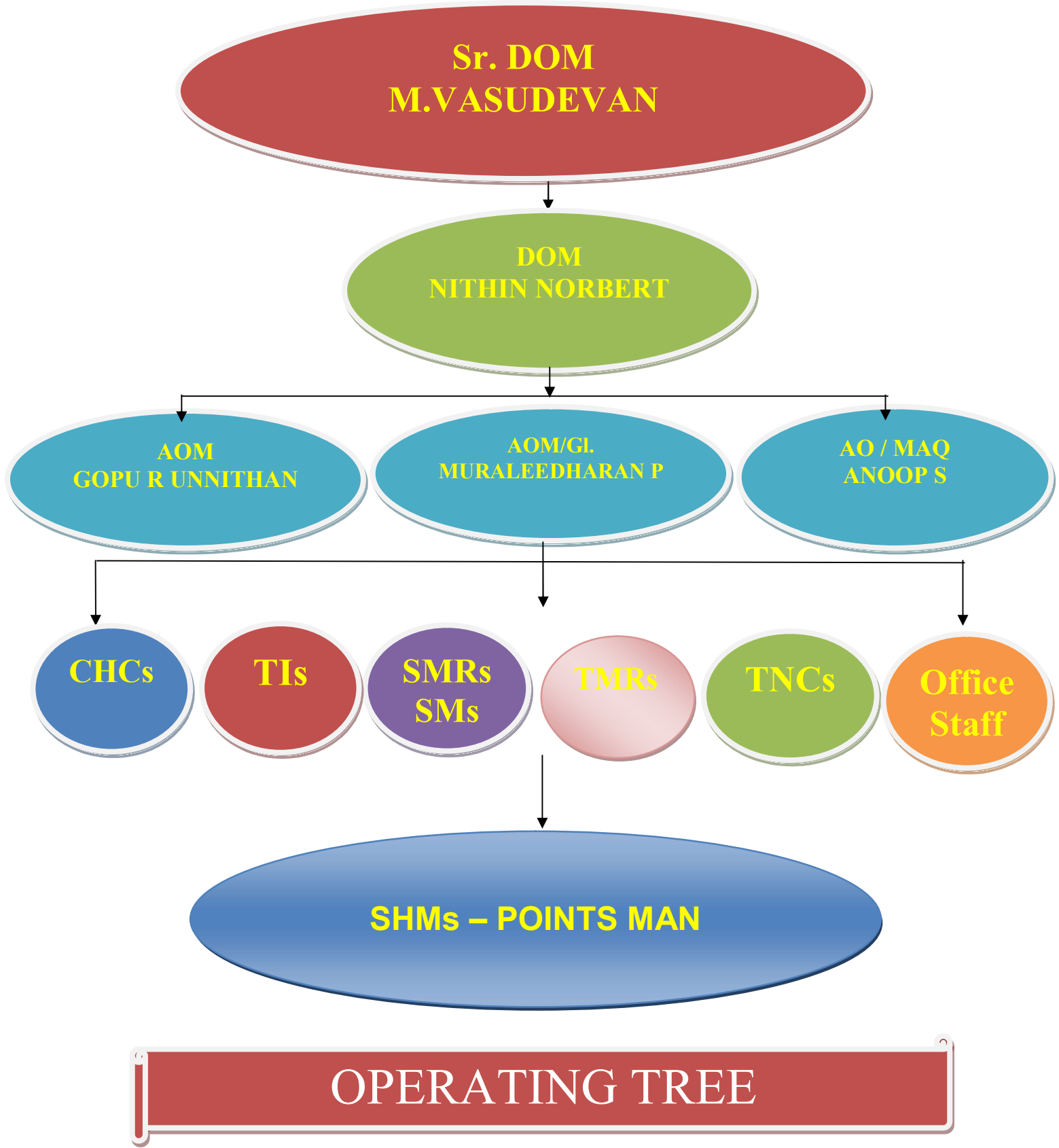
**TMRs**

**TNCs**

**Office  
Staff**

**SHMs – POINTS MAN**

**OPERATING TREE**



**GLIMPSES OF OPERATING HISTORY- PGT DIVISION**

		<b>INDICES</b>	<b>2021-22</b>	<b>2022-23</b>	<b>2023-24 (APR-AUG)</b>
<b>ABSOLUTE INDICES</b>		STOCK HOLDING (Wagons)	927.1	831.4	731.3
		DIVISIONAL RELEASE	225.5	201.7	182.0
		THROUGHPUT	3758.4	3641.8	2742.6
		D/A TRAINS RUN	96.4	93.0	73.8
		GTKM IN 000s	282649.3	276336.9	228681.8
		NTKM	145488.2	151952.9	124307.8
		GOODS TRAIN HOURS	4317.7	3214.6	2642.0
		GOODS ENGINE HOURS	14744.4	15488.3	16057.6
		GOODS TRAIN KMS	197412.4	131596.2	109090.8
	<b>INTER CHANGE</b>	I/C FROM SA (No.of Trains)	272.7	230.2	199.0
		I/C TO SA (No.of Trains)	235.8	224.8	192.6
		I/C FROM TVC (No.of Trains)	163.9	161.1	143.2
		I/C TO TVC (No.of Trains)	168.0	161.8	145.0
		I/C FROM MDU	1.0	3.0	2.2
		I/C TO MDU	2.1	3.3	9.2
		I/C FROM MYS (No.of Trains)	69.5	77.0	76.8
		I/C TO MYS (No.of Trains)	80.6	98.2	105.4
		I/C FROM KONKAN (No.of Trains)	125.9	150.3	146.6
		I/C TO KONKAN (No.of Trains)	144.0	135.8	117.6
		ORGTG LOADING-TONNES-M/A	305201.1	346158.0	362651.9
	<b>LOADING</b>	ORGTG LOADING-WAGONS	4693.0	5323	5662
		ORGTG-CEMENT LOADING	32.17	40	75
		ORG-FOODGRAIN LOADING	1.75	2	0
		ORG - COAL LOADING	2355.83	3389	3445
		ORG-FERTILISER LOADING	1243.7	1295	1702
		ORG-OTHERS-LOADING	980.3	575	440
		<b>EFFICIENCY INDICES</b>	<b>LOCO</b>	EKM DIESEL	459.4
EKM ELECETRIC	650.3			559.0	528.4
<b>WAGON</b>	WAGON KM-WAGON DAY		191.2	193.7	179.9
	WAGON TURN ROUND		1.35	1.13	1.12
<b>OVERALL FREIGHT</b>	SPEED OF GOODS TRAIN		45.7	41.0	41.3
	NTKM PER WAGON DAY(in use)		5043.3	5894.3	5451.0
	NTKM PER ENG HOURS		9611.3	9696.9	7737.0
<b>PUNCTUALITY</b>	PUNCTUALITY-MAIL-EXP		97.8	94.5	96.4
	PUNCTUALITY-PASSENGER		98.6	96.8	97.8