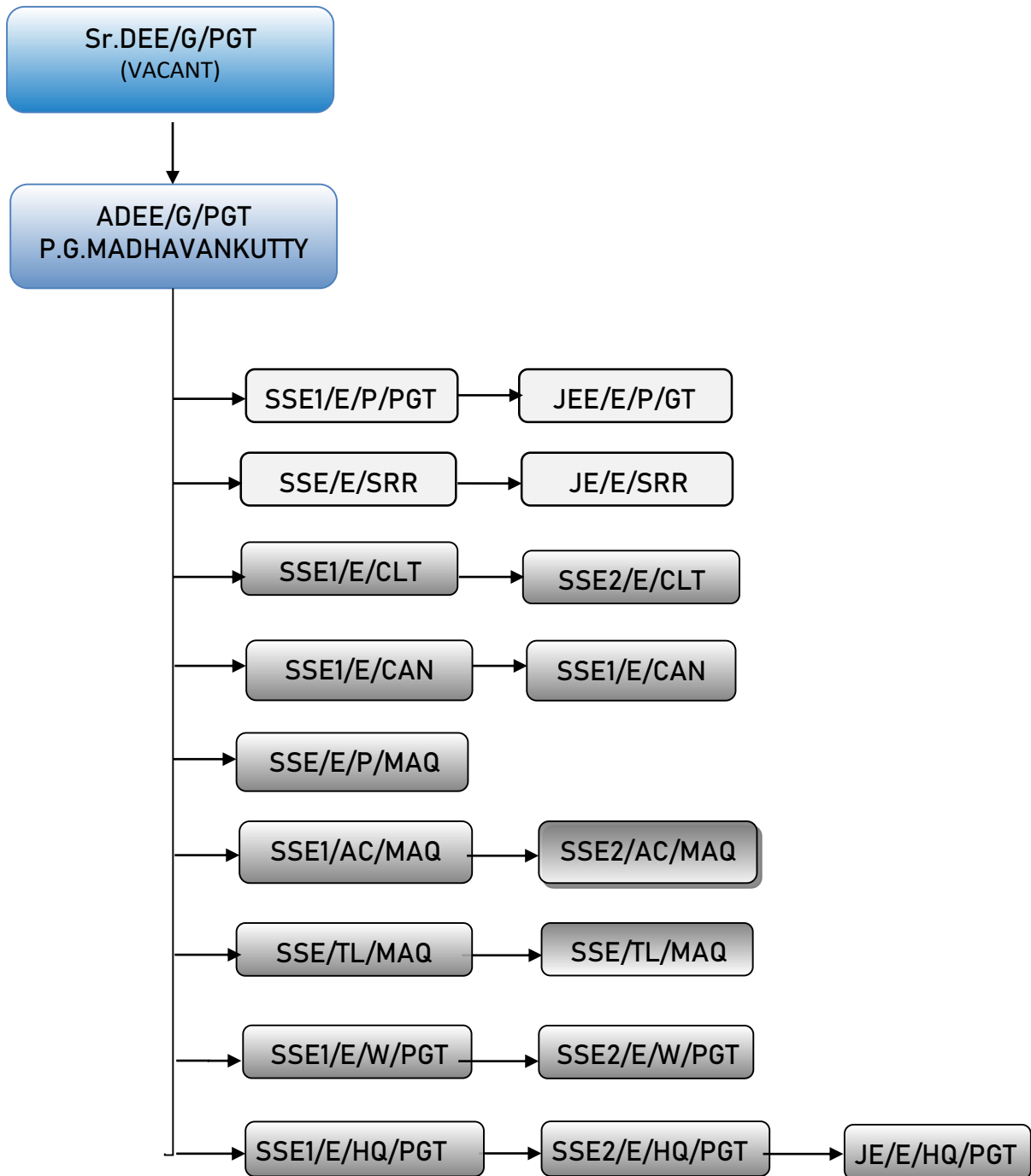


ORGANIZATIONAL CHART



DIVISION- GENERAL DETAILS

STATIONS CATEGORY WISE

Category of Stations	No.		Category of Stations	No.
NSG2	1		NSG6	28
NSG3	9		HG1	2
NSG4	5		HG2	21
NSG5	8		HG3	15

Total Commercial Stations = 89

Non-Commercial Stations = 6

DEPOT ACTIVITIES

Power	PGT, SRR, CLT,CAN, MAQ, POY
Coaching	TL/MAQ, AC/MAQ, TL & IOH /SRR
Electrical Works	PGT

POWER DEPOT JURISDICTIONS – STATION WISE

PGT DEPOT - MDKI, ETMD, WRA, CLMD, KJKD, KTKU, PGT, PLL, MNY, LDY, OTP, PGTN, PDGM, VDK, KLGD, MMDA, MXM, ANM, POY, CNV

SRR DEPOT - MNUR, SRR, KRKD, PTB, KODN, PUM, PEU, KTU, TUA, TIR, VDKS, VPZ,KZC,CQA,AAM,PKQ,MLTR,TUV,TDPM,VNB,NIL

CLT DEPOT - TA, PGI, VLI, KN, FK, KUL, CLT, VLL, WH, ETR, CMC, QLD, VEK, TKT, PYOL, IGL, BDJ, NAU, MUKE, MAHE

CAN DEPOT - JGE, TLY, DMD, ETK, CS, CAN, CQL, VAPM, PPNS, KPQ, PAZ, ELM, PAY, TKQ, CDRA, CHV

MAQ DEPOT - NLE, KZE, BFR, KQK, KLAD, KGQ, KMQ, UAA, MJS, ULL, TKOT, MAQ, MAJN

VITAL ELECTRICAL ASSETS / INSTALLATIONS

POWER SIDE

- **HT & LT Supply points** - Power supply is availed from Electricity Boards / Companies of Kerala, Karnataka and Tamil Nadu. There are 10 HT supply points (KSEB-8, MESCOM-2) and 300 LT supply points (KSEB-249, TANGEDCO-31, MESCOM-20) of Electric Supply.
- **Sub-Stations** - HT supply availed at 10 points is distributed through 13 sub-stations, which are equipped with 26 transformers with an installed capacity of 7345 KVA.
- **Lift & Escalator** - There are total 24 Nos. of passenger Lifts and 13 Nos. of Escalators at various major stations and one number bed Lift at RH / PGT.
- **Pumping Installations** - Water supply to stations, service buildings and staff quarters is maintained by pumping water from different sources and distributed through a distribution network situated at 66 pumping installations utilizing 137 pump sets.
- **Air-conditioning Plants** - Air-conditioning of various service buildings, Retiring rooms, Waiting halls, hospitals, S&T installations, ORH, VSS of Nirbhaya schemes etc. are being done by 316 Nos. of split type AC units.
- **Water Coolers** - 112 water coolers have been provided for supplying cooled water at various stations, running rooms, retiring rooms, ORH, service buildings etc.
- **DG sets** - Standby supply is provided at various stations, running rooms, service buildings, hospitals, PRS/UTS etc. through 38 DG sets (5kVA and above capacity) with an installed capacity of 2717 KVA.
- **Emergency Lights** - Inverters / DC emergency lights/ Emergency lights from AT supply have been provided at 51 stations for emergency lighting arrangements.
- **PRS & UTS Centres** - There are 110 Nos. of UPSs provided in UTS/PRS centers. Standby supplies through AT / Generator sets for all PRS/UTS centers have been provided.
- **LC gates** - All the manned LC gates have been electrified.
- **Staff Quarters** -All the staff quarters over the division are electrified.
- **Power Line Crossings** -There are 202 underground power line crossings and 57 overhead power line crossings in the division.
- **Electrified Stations** - All the 95 stations (including 6 Non-commercial stations) over the division have been electrified.
- **Battery Chargers** - 47 Nos. of TL battery chargers have been provided at various stations and pit lines for charging of TL coach batteries.
- **Pre-cooling bunks** - 88 Nos. of precooling bunks are provided all over the division on Platforms of Major stations and Pit lines for precooling of AC coaches.

- **Roof top solar power plants** of 490.4 kWp capacity installed in PGT division, expected an average generation of 5 Lakh units and Rs. 20 lakhs savings in energy bill per annum.

DETAILS OF OVER HEAD POWER LINE CROSSING OVER PGT DIVISION

Section	PTJ-SRR	PGT-POY	SRR-NIL	SRR-CLT	CLT-CAN	CAN-MAQ	Around MAQ	TOTAL
Nos.	18	9	13	4	0	2	7	53

HT CONNECTIONS

Sl. No	Depot	SC No.	Location	System voltage in kV	Supply Authority	Contract Demand in kVA	Connected Load in kW
1	MAQ	HT-21	MAQ	11	MESCOM	350	2854
2	MAJN	KUL HT-7	MAJN	11	MESCOM	100	1560
3	CAN	13/1312	CAN	11	KSEB	160	711.54
4	CLT	13 / 1314	CLT	11	KSEB	200	766.4
5	SRR	10/1003	SRR	11	KSEB	300	1424
6	PGT	1325	HNC	11	KSEB	250	1008.19
7	PGT	1336	DRM/O	11	KSEB	180	450.59
8	PGT	3361	GLR	11	KSEB	150	488.72
9	PGT	1004	STN	11	KSEB	150	285.52
10	PGT	1005	KAL	11	KSEB	60	82.81

TRANSFORMERS

Sl. No.	Location	Volt in kV	Capacity in kVA						Total Nos	Total Capacity (KVA)
			150	160	200	250	315	400		
1	MAQ	11						2	2	800
2	MAJN	11				2			2	500
3	CAN	11					2		2	630
4	CLT	11						2	2	800
5	SRR-MAIN SUB STN	11						2	2	800
6	SRR-RIVER BED	11		2					2	320
7	SRR- HILL COLONY	11		2					2	320
8	PGT-KALPATHY	11	2						2	300
9	PGT-STATION	11					2		2	630
10	PGT-GLR	11				2			2	500
11	PGT-DRM/O	11					2		2	630
12	PGT-HNC	11					1	1	2	715
13	PGT-RH	11			2				2	400
TOTAL									26	7345

DG SETS IN DIVISION

Standby supply is provided at stations, hospital, pumps, office & colony loads through 29 DG sets (capacity-5kVA & above) with an installed capacity of 2647.5kVA.

Station	Capacity Of the DG set. (in kVA)	Standby supply for
MAQ	250	Station loads
MAQ	160	Station loads
MAQ	37.5	Station loads
MAJN	63	Station loads
KGQ	5	Station loads
PNMB	5	Station loads
CAN	62.5	Station loads
CAN	37.5	Station loads
CAN	40	Station loads
CAN	5	Running Room
CLT	160	Station loads
CLT	62.5	Station loads
CLT	37.5	Station loads
CLT	5	Running Room
BDJ	5	Station loads
SRR	160	Station loads
SRR-RB	62.5	Pump loads
SRR	5	Running Room
TIR	7.5	Station loads
PGT- stn	166	Station loads
PGT- stn	250	Station loads
PGT-GLR	125	Pump loads
PGT-RH	160	Hospital loads
DRM/O	250	Office loads
DRM/O	63	Office loads
PGT-HNC	170	Colony loads
PGT-HNC	160	Colony loads
PGT-KALPATHY	37.5	Pump Loads
POY	62.5	Station Loads

STAFF POSITION OF DIVISION AS ON 31.12.22

Category	Sanction	On Roll	Excess/Vacancy
Supervisors	21	19	-2
Administrative staff	15	9	-6
Drawing staff	02	02	0
Artisans	231	204	-27
Helpers	96	44	-52
ACCA	19	22	+3
Total	384	300	84