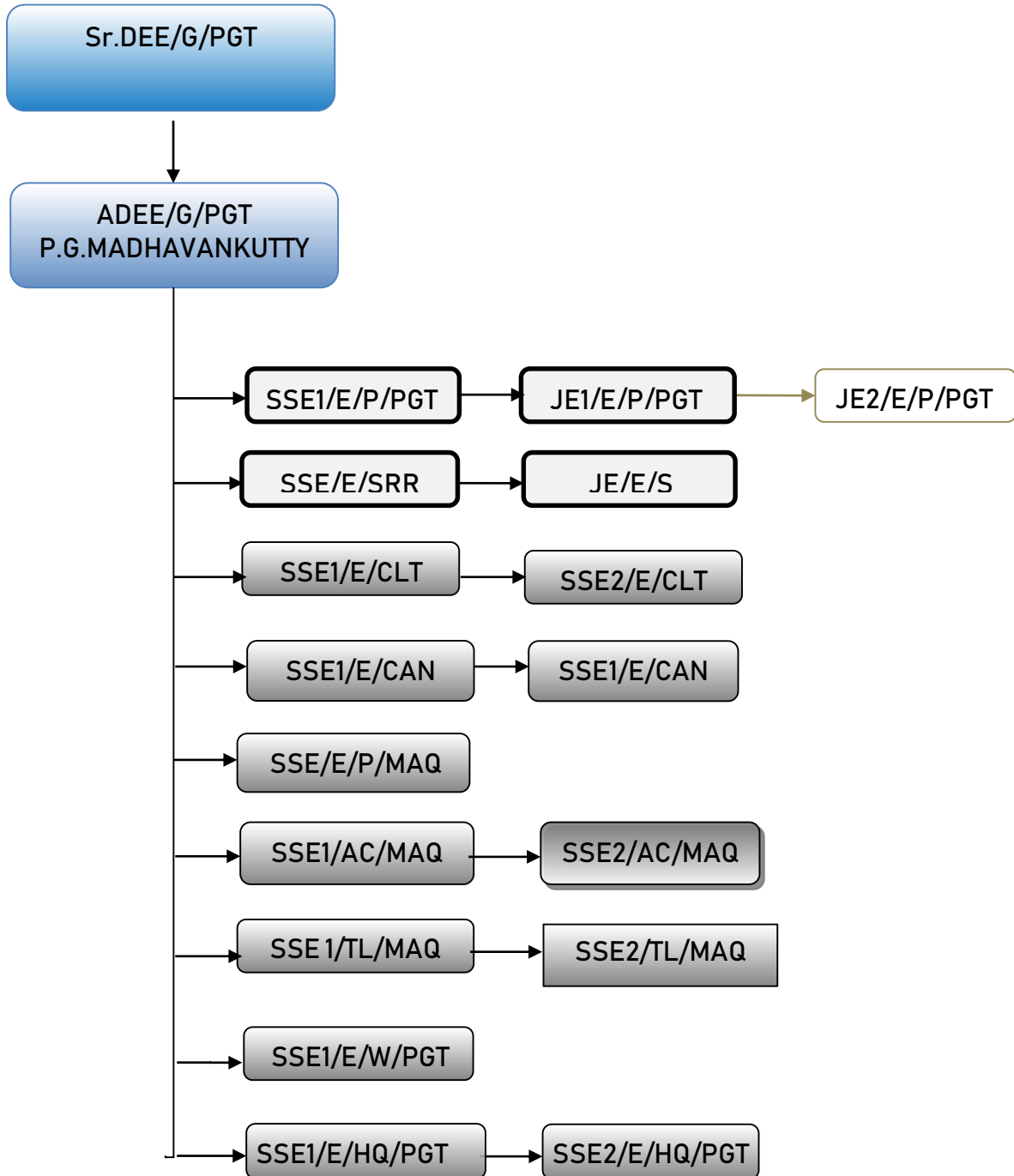


# ORGANIZATIONAL CHART



## DIVISION- GENERAL DETAILS

### STATIONS CATEGORY WISE

Category of Stations	No.		Category of Stations	No.
NSG2	1		NSG6	28
NSG3	9		HG1	2
NSG4	5		HG2	21
NSG5	8		HG3	15

Total Commercial Stations = 89

Non-Commercial Stations = 6

### DEPOT ACTIVITIES

Power	PGT, SRR, CLT,CAN, MAQ, POY
Coaching	TL/MAQ, AC/MAQ, TL & IOH /SRR
Electrical Works	PGT

### POWER DEPOT JURISDICTIONS – STATION WISE

**PGT DEPOT** - MDKI, ETMD, WRA, CLMD, KJKD, KTKU, PGT, PLL, MNY, LDY, OTP, PGTN, PDGM, VDK, KLGD, MMDA, MXM, ANM, POY, CNV

**SRR DEPOT** - MNUR, SRR, KRKD, PTB, KODN, PUM, PEU, KTU, TUA, TIR, VDKS, VPZ,KZC,CQA,AAM,PKQ,MLTR,TUV,TDPM,VNB,NIL

**CLT DEPOT** - TA, PGI, VLI, KN, FK, KUL, CLT, VLL, WH, ETR, CMC, QLD, VEK, TKT, PYOL, IGL, BDJ, NAU, MUKE, MAHE

**CAN DEPOT** - JGE, TLY, DMD, ETK, CS, CAN, CQL, VAPM, PPNS, KPQ, PAZ, ELM, PAY, TKQ, CDRA, CHV

**MAQ DEPOT** - NLE, KZE, BFR, KQK, KLAD, KGQ, KMQ, UAA, MJS, ULL, TKOT, MAQ, MAJN

## VITAL ELECTRICAL ASSETS / INSTALLATIONS

### POWER SIDE

- **HT & LT Supply points** - Power supply is availed from Electricity Boards / Companies of Kerala, Karnataka and Tamil Nadu. There are 10 HT supply points (KSEB-8, MESCOM-2) and 300 LT supply points (KSEB-249, TANGEDCO-31, MESCOM-20) of Electric Supply.
- **Sub-Stations** - HT supply availed at 10 points is distributed through 13 sub-stations, which are equipped with 26 transformers with an installed capacity of 7345 KVA.
- **Lift & Escalator** - There are total 22 Nos. of passenger Lifts and 10 Nos. of Escalators at various major stations and one number bed Lift at RH / PGT.
- **Pumping Installations** - Water supply to stations, service buildings and staff quarters is maintained by pumping water from different sources and distributed through a distribution network situated at 66 pumping installations utilizing 137 pump sets.
- **Air-conditioning Plants** - Air-conditioning of various service buildings, Retiring rooms, Waiting halls, hospitals, S&T installations, ORH, VSS of Nirbhaya schemes etc. are being done by 316 Nos. of split type AC units.
- **Water Coolers** - 112 water coolers have been provided for supplying cooled water at various stations, running rooms, retiring rooms, ORH, service buildings etc.
- **DG sets** - Standby supply is provided at various stations, running rooms, service buildings, hospitals, PRS/UTS etc. through 38 DG sets (5kVA and above capacity) with an installed capacity of 2717 KVA.
- **Emergency Lights** - Inverters / DC emergency lights/ Emergency lights from AT supply have been provided at 51 stations for emergency lighting arrangements.
- **PRS & UTS Centres** - There are 110 Nos. of UPSs provided in UTS/PRS centers. Standby supplies through AT / Generator sets for all PRS/UTS centers have been provided.
- **LC gates** - All the manned LC gates have been electrified.
- **Staff Quarters** -All the staff quarters over the division are electrified.
- **Power Line Crossings** -There are 202 underground power line crossings and 57 overhead power line crossings in the division.
- **Electrified Stations** - All the 95 stations (including 6 Non-commercial stations) over the division have been electrified.
- **Battery Chargers** - 47 Nos. of TL battery chargers have been provided at various stations and pit lines for charging of TL coach batteries.

- **Pre-cooling bunks** - 88 Nos. of precooling bunks are provided all over the division on Platforms of Major stations and Pit lines for precooling of AC coaches.
- **Roof top solar power plants** of 480 kWp capacity installed in PGT division, expected an average generation of 5 Lakh units and Rs. 20 lakhs savings in energy bill per annum.

**DETAILS OF OVER HEAD POWER LINE CROSSING OVER PGT DIVISION**

Section	PTJ-SRR	PGT-POY	SRR-NIL	SRR-CLT	CLT-CAN	CAN-MAQ	Around MAQ	TOTAL
Nos.	18	9	13	4	0	2	7	53

**HT CONNECTIONS**

Sl. No	Depot	SC No.	Location	System voltage in kV	Supply Authority	Contract Demand in kVA	Connected Load in kW
1	MAQ	HT-21	MAQ	11	MESCOM	350	2854
2	MAJN	KUL HT-7	MAJN	11	MESCOM	100	1560
3	CAN	13/1312	CAN	11	KSEB	160	711.54
4	CLT	13/ 1314	CLT	11	KSEB	200	766.4
5	SRR	10/1003	SRR	11	KSEB	300	1424
6	PGT	1325	HNC	11	KSEB	200	1008.19
7	PGT	1336	DRM/O	11	KSEB	180	450.59
8	PGT	3361	GLR	11	KSEB	80	488.72
9	PGT	1004	STN	11	KSEB	150	285.52
10	PGT	1005	KAL	11	KSEB	60	82.81

**TRANSFORMERS**

Sl. No.	Location	Volt in kV	Capacity in kVA						Total Nos	Total Capacity (KVA)
			150	160	200	250	315	400		
1	MAQ	11						2	2	800
2	MAJN	11				2			2	500
3	CAN	11					2		2	630
4	CLT	11						2	2	800
5	SRR-MAIN SUB STN	11						2	2	800
6	SRR-RIVER BED	11		2					2	320
7	SRR- HILL COLONY	11		2					2	320
8	PGT-KALPATHY	11	2						2	300
9	PGT-STATION	11					2		2	630
10	PGT-GLR	11				2			2	500
11	PGT-DRM/O	11					2		2	630
12	PGT-HNC	11					1	1	2	715

13	PGT-RH	11			2				2	400
TOTAL									26	7345

### DG SETS IN DIVISION

Standby supply is provided at stations, hospital, pumps, office & colony loads through 29 DG sets ( capacity-5kVA & above ) with an installed capacity of 2647.5kVA.

Station	Capacity Of the DG set. (in kVA)	Standby supply for
MAQ	250	Station loads
MAJN	63	Station loads
KGQ	5	Station loads
PNMB	5	Station loads
CAN	62.5	Station loads
CAN	37.5	Station loads
CAN	40	Station loads
CAN	5	Running Room
CLT	160	Station loads
CLT	62.5	Station loads
CLT	37.5	Station loads
CLT	5	Running Room
BDJ	5	Station loads
SRR	160	Station loads
SRR-RB	62.5	Pump loads
SRR	5	Running Room
TIR	7.5	Station loads
PGT- stn	166	Station loads
PGT- stn	250	Station loads
PGT-GLR	125	Pump loads
PGT-RH	160	Hospital loads
DRM/O	250	Office loads
DRM/O	63	Office loads
PGT-HNC	170	Colony loads
PGT-HNC	160	Colony loads
PGT-KALPATHY	37.5	Pump Loads
POY	62.5	Station Loads

### STAFF POSITION OF DIVISION as on 31.07.2022

Category	Sanction	On Roll	Vacancy
Supervisors	21	17	4
Administrative staff	15	11	4
Drawing staff	02	02	0
Artisans	231	205	26
Helpers	96	46	50
ACCA	19	18	1
<b>Total</b>	<b>384</b>	<b>299</b>	<b>85</b>