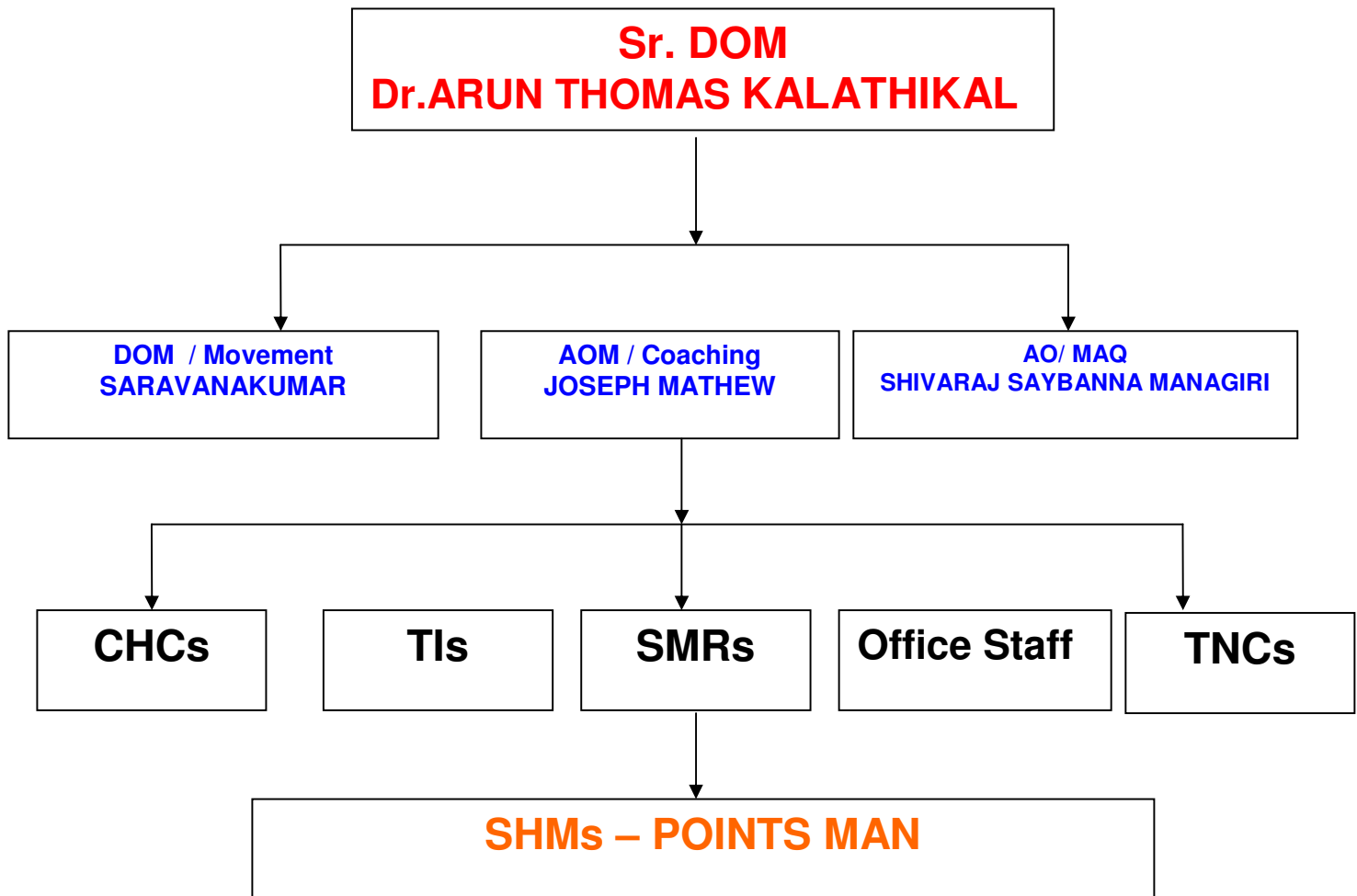


# Operating Organization Chart



**GLIMPSES OF OPERATING HISTORY- PGT DIVISION**

		<b>INDICES</b>	<b>2021-22</b>	<b>2022-23 (APR-MAY)</b>
<b>ABSOLUTE INDICES</b>		STOCK HOLDING (Wagons)	927.1	872.9
		DIVISIONAL RELEASE	225.5	229.6
		THROUGHPUT	3758.4	3738.0
		D/A TRAINS RUN	96.4	94.5
		GTKM IN 000s	282649.3	274075.5
		NTKM	145488.2	148597.5
		GOODS TRAIN HOURS	4317.7	3279.5
		GOODS ENGINE HOURS	14744.4	13712.5
		GOODS TRAIN KMS	197412.4	133108.5
	<b>INTER CHANGE</b>	I/C FROM SA (No.of Trains)	272.7	232.5
		I/C TO SA (No.of Trains)	235.8	227.0
		I/C FROM TVC (No.of Trains)	163.9	165.0
		I/C TO TVC (No.of Trains)	168.0	152.5
		I/C FROM MDU	1.0	0.0
		I/C TO MDU	2.1	1.5
		I/C FROM MYS (No.of Trains)	69.5	83.0
		I/C TO MYS (No.of Trains)	80.6	101.0
		I/C FROM KONKAN (No.of Trains)	125.9	194.0
		I/C TO KONKAN (No.of Trains)	144.0	198.0
	<b>LOADING</b>	ORGTG LOADING-TONNES-M/A	305201.1	495994.8
		ORGTG LOADING-WAGONS	4693.0	7629
		ORGTG-CEMENT LOADING	32.17	12
		ORG-FOODGRAIN LOADING	1.75	0
		ORG - COAL LOADING	2355.83	5650
		ORG-FERTILISER LOADING	1243.7	1498
		ORG-OTHERS-LOADING	980.3	470
		<b>EFFICIENCY INDICES</b>	<b>LOCO</b>	EKM DIESEL
EKM ELECETRIC	650.3			563.5
<b>OVERALL WAGON FREIGHT</b>	WAGON KM-WAGON DAY		191.2	184.5
	WAGON TURN ROUND		1.35	1.05
	SPEED OF GOODS TRAIN		45.7	40.6
	NTKM PER WAGON DAY(in use)		5043.3	5472.5
	NTKM PER ENG HOURS		9611.3	10842.0
<b>PUNCTUALITY</b>	PUNCTUALITY-MAIL-EXP		97.8	96.3
	PUNCTUALITY-PASSENGER		98.6	98.2